

ACCELERATING AGENT

ACR® Accelerating Agent is an acetic based solution designed to be used in combination with Alchemco's TechCrete 2500, CretePro and BridgeDECK products. ACR Accelerating Agent increases the effectiveness of these products to seal small cracks and voids in the concrete. This product should only be used in combination with these products for cracks and voids in the concrete surface. Do not use for general applications.

ACR Accelerating Agent is **required** to be used for any TechCrete 2500 system for issuance of any of the TechCrete Limited Liability Material & Labor Warranties.



TYPICAL APPLICATIONS

- Parking Decks
- Precast Elements & Panels
- Specialty Applications
- Tiled Showers
- Airport Runways, Taxiways, & Aprons
- Wharf Decks & Marine Structures.



PRODUCT PROPERTIES

- Slight acetic odor
- Non-toxic & Biodegradable
- Percent non-volatile solids: 7.5%
- Flash point - no true flash - boils at 214°F (101°C)
- Auto-ignition temperature - N/A Non-explosive
- Viscosity: 890
- Hazardous chemicals: None
- pH 6.3-9.6



PERFORMANCE CHARACTERISTICS

- Increases the calcium content of the concrete
- Enhances the sealing of cracks on initial application and will help to seal future cracks.
- Non-toxic



PRECAUTIONS

Protect glass, terracotta and glass-glazed tiles, marble and travertine from over-spray.



APPLICATION

CAUTION: ACR Accelerating Agent should only be applied to a surface that has been treated with TechCrete 2500, CretePro, or BridgeDECK products. If there are questions which product, or combination of products, to use contact the Technical Department at 800-610-2895.

NOTE: Any Alchemco system products should only be applied when the ambient temperature is 40°F (+4°C) and rising or 100°F (+38°C) and falling.

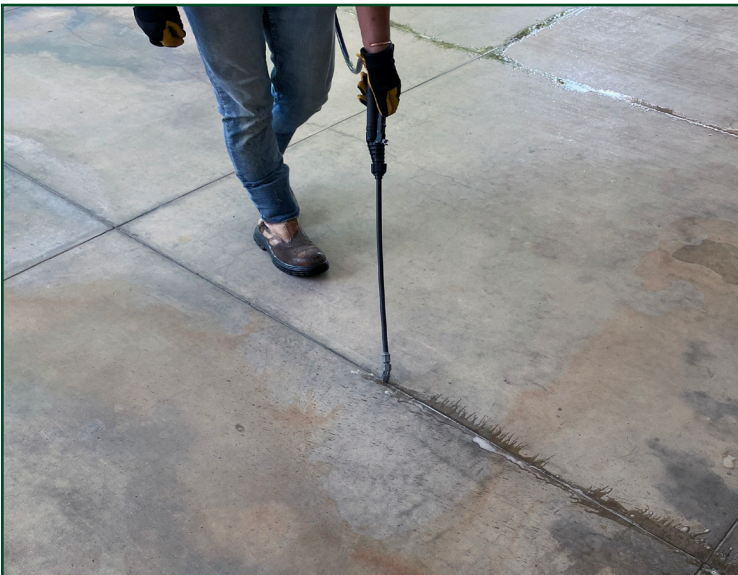
Application Rates

Normal: 1 gallon per 200 square feet of surface area on average. Can vary depending on substrate absorption, including the age of concrete and original density.

ACCELERATING AGENT

APPLYING PRODUCT

1. TechCrete 2500, CretePro and BridgeDeck products require that the surface of the concrete being treated be clean and free of dirt and debris. The method of cleaning the concrete surface depends on the severity of the dirt and contaminants contained within the concrete. There are many products within the Alchemco ACR line of products for cleaning and prepping the surface of concrete.
2. Apply TechCrete 2500, CretePro or BridgeDECK products in accordance with each products directions and application rates. When the surface becomes dry to the touch - (usually 2-6 hours depending on wind conditions and ambient temperature) wash down the treated areas with water. If the product is still wet after 5 hours, begin washing to remove excess material from the surface of the concrete.
3. Once the area has become dry to the touch and the washing has been completed, apply ACR Crack & Void Treatment to all cracks. Apply the ACR Crack & Void directly into the cracks. Once the ACR Crack & Void has been applied the application of the ACR Accelerating Agent may begin.



4. Once the ACR Crack & Void Treatment has been applied, begin applying ACR Accelerating Agent to the entire surface where the TechCrete 2500, CretePro or BridgeDeck products have been applied. Apply at a rate of 180-200 square feet per gallon.
5. Once both the ACR Crack & Void and ACR Accelerating Agent have been applied. Allow the application to dry to the touch. Once dry to the touch, begin washing the excess material from the surface of the concrete.
6. NOTE: Washing of the excess material is important to ensure that product does not dry on the surface. Dry product on the surface will leave white streaks that may not be aesthetically pleasing.



LIMITATIONS

ACR Accelerating Agent is not a sealing solution and should not be used as one. ACR Accelerating Agent is designed and intended to be used to increase the effectiveness of the TechCrete 2500, CretePro, and BridgeDECK products.



ACCELERATING AGENT

PERFORMANCE TIMELINE

When used in combination with TechCrete 2500, CretePro and BridgeDECK products, ACR Crack & Void Treatment becomes integral with the products creating a bio-based modified sodium silicate gel-forming technology to stop water penetration. Sodium Silicate is often referred to as “liquid glass” and is a silicon-oxygen polymer containing ionic sodium (Na+) components. Sodium silicate is similar to carbon-based plastics since silicon-oxygen-silicon bonds between each monomer are covalent. The polymer-like nature of the sodium silicate matrix as well as the polar character of oxygen and sodium atoms allows for bonding of water molecules within the polymer matrix. The modified sodium silicate penetrates into and bonds with the concrete to create a barrier to water, stopping the water from within the concrete rather than on the surface. The chemical reaction that creates this barrier is catalytic in nature and **may require 3-5 days to reach full water stopping capabilities.** Full waterproofing should not be expected until complete gel formation has been achieved.



PACKAGING

ACR Accelerating Agent is supplied as a concentrate in the following sizes;

- 1/2 gallon Jug Makes 5 gallon pail
- 1 gallon pail Makes 55 gal drum

ACR Accelerating Agent may also be purchased in the following sizes as a ready-to-use product on a special order basis.

- 5 gallon pail
- 55 gallon drum



SHELF LIFE & STORAGE

Containers should be sealed and kept in a cool, dry location. Avoid prolonged exposure to direct sunlight. If properly maintained this product has a shelf life of one (1) year.



WARRANTY & SYSTEMS

ACR Accelerating Agent does not have its own warranty, but becomes part of the warranty for whatever system it is used in combination with.

For additional information about the Alchemco system specifications or available warranties, either contact your local Alchemco distributor or Alchemco's Technical Department at technical@alchemco.com or call 800-610-2895.



WARNINGS



DANGER!

This product may be harmful if swallowed. Wash hands, face and any exposed skin thoroughly after handling. Keep container tightly closed. Do not eat, drink or smoke when using this product.

IF SWALLOWED: Immediately call a POISON CONTROL CENTER or doctor/physician. Rinse mouth.

See Safety Data Sheet for further details regarding safe use of this product. Safety Data Sheets for any Alchemco product may be obtained by contacting Alchemco, 3532 Mayland Court, Henrico, VA 23233. 800-610-2895 or emailing technical@alchemco.com or calling

**CHEMTREC 800-424-9300 (US)
703-741-5970 (International).**



WARRANTY DISCLAIMER

Because of conditions of use which may be beyond our control, Alchemco shall not be held responsible in any manner for any personal injury or property loss resulting to the buyer or any other person from handling, storage, or use of this material not in accordance with directions. The buyer and/or user assumes all risk and liability resulting from improper handling or usage. There is no warranty expressed or implied of any kind, except as supplied in writing.